



Burst Disc Technology

Building on its reputation of being the best known, most reliable, widest application circulation tool on the market, the PBL® Multiple Activation Bypass Tool now gives operators even more flexibility. With the incorporation of a high pressure/ high temperature Burst Disc into the lower section of the PBL® tool, BHA and bit pack-off issues can be easily remediated by allowing an alternate flow path to re-establish circulation and regain well control through activation of the PBL® tool.

DSI-PBL.COM

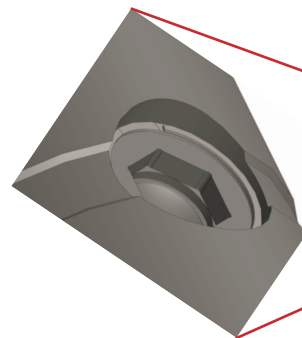
UNIQUE FEATURES

BENEFITS

- High back pressure capability (5000 PSI) to allow running tools in hole without filling pipe if desired
- Numerous application-specific pressures and temperatures available
- Large flow diameter to accommodate high flow rates, if required
- No effect on PBL® tool operation
- No additional sub length; incorporated into existing tool components
- Simple replacement once it is utilized

SPECIFICATIONS

Tool Size (in.)	4 3/4 and larger
Number of discs	1
Number of burst cycles	1
Burst disc diameter (in²)	0.785
Burst disc flow area (in²)	5.000
EHD (in.)	1.46
Pressure rating	As per the chart



DSI-PBL.COM

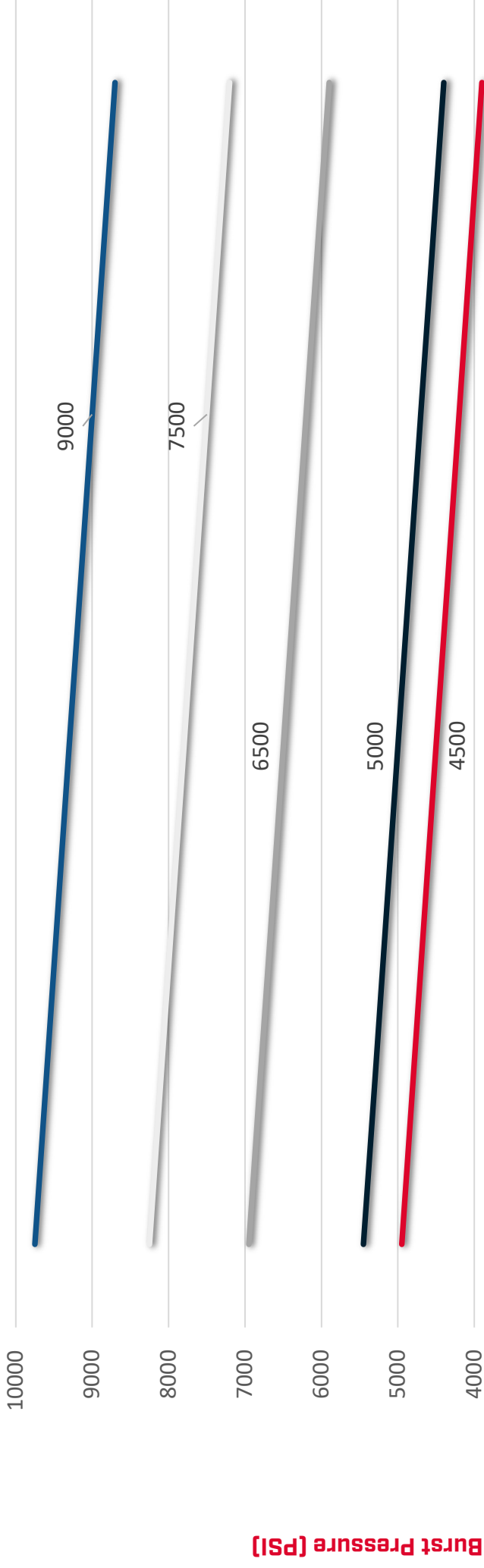
ENQUIRIES@DSI-PBL.COM

® PBL IS A REGISTERED TRADEMARK OF SBO



DSI A COMPANY OF
SCHOELLER-BLECKMANN

BURST DISC TEMPERATURE CORRECTION CHART



Bottom Hole Temperature (°F)

	100	150	200	250	300	350	400	450
4,500 PSI Disc @ 250°F	4950	4800	4650	4500	4350	4200	4050	3900
5,000 PSI Disc @ 250°F	5450	5300	5150	5000	4850	4700	4550	4400
6,500 PSI Disc @ 250°F	6950	6800	6650	6500	6350	6200	6050	5900
7,500 PSI Disc @ 350°F	8250	8100	7950	7800	7650	7500	7350	7200
9,000 PSI Disc @ 350°F	9750	9600	9450	9300	9150	9000	8850	8700